
Reunion Ranch

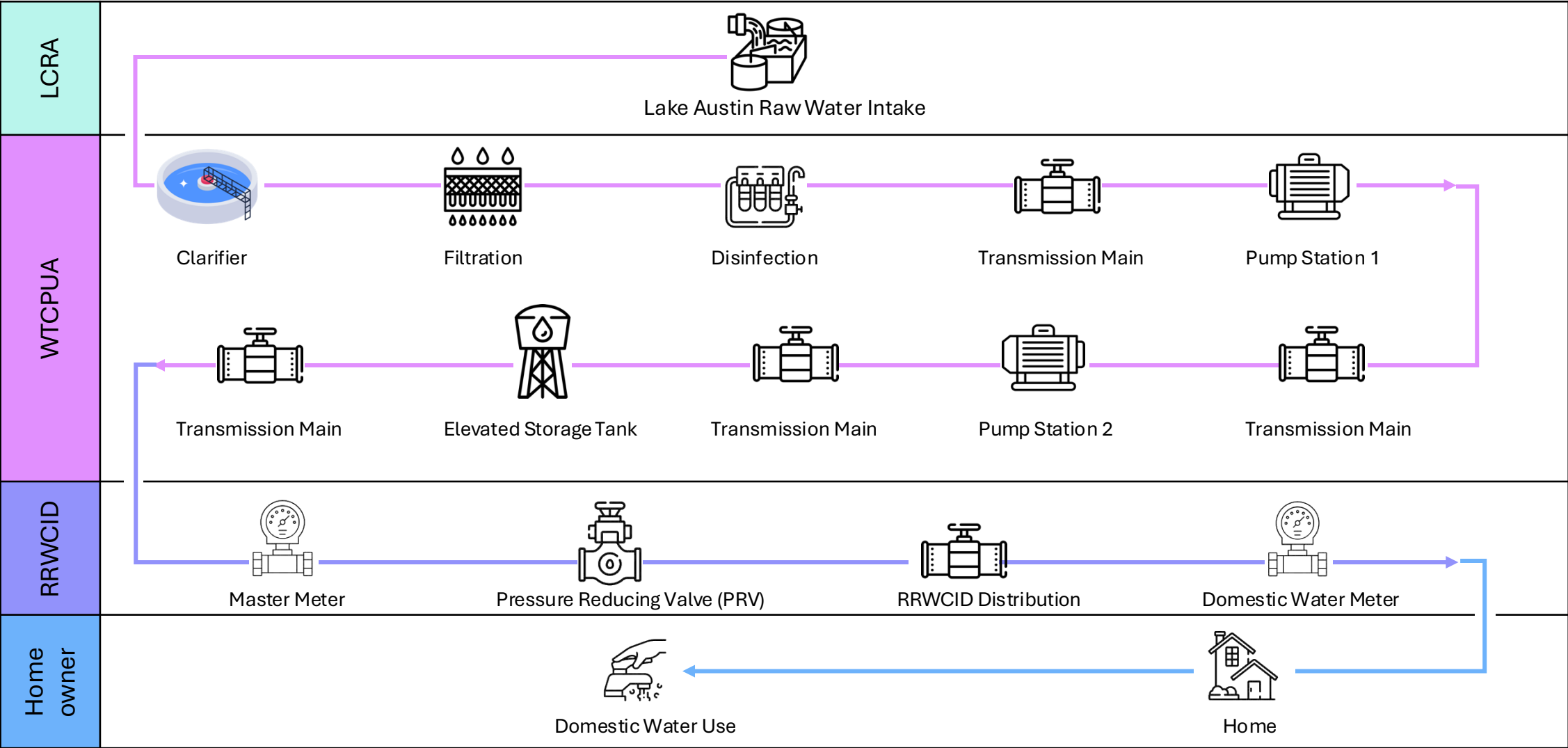
Water Control and Improvement District

Water System Overview

Tuesday, August 20th, 2024

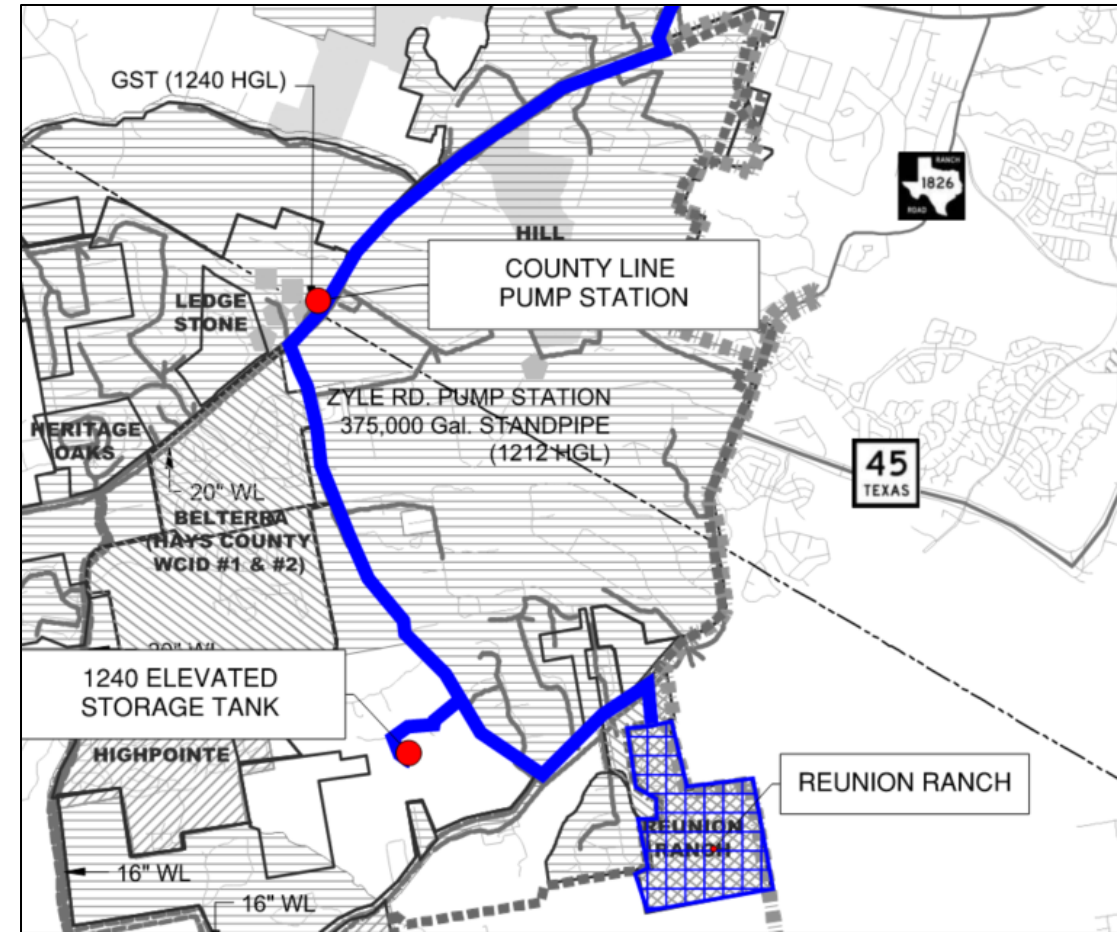
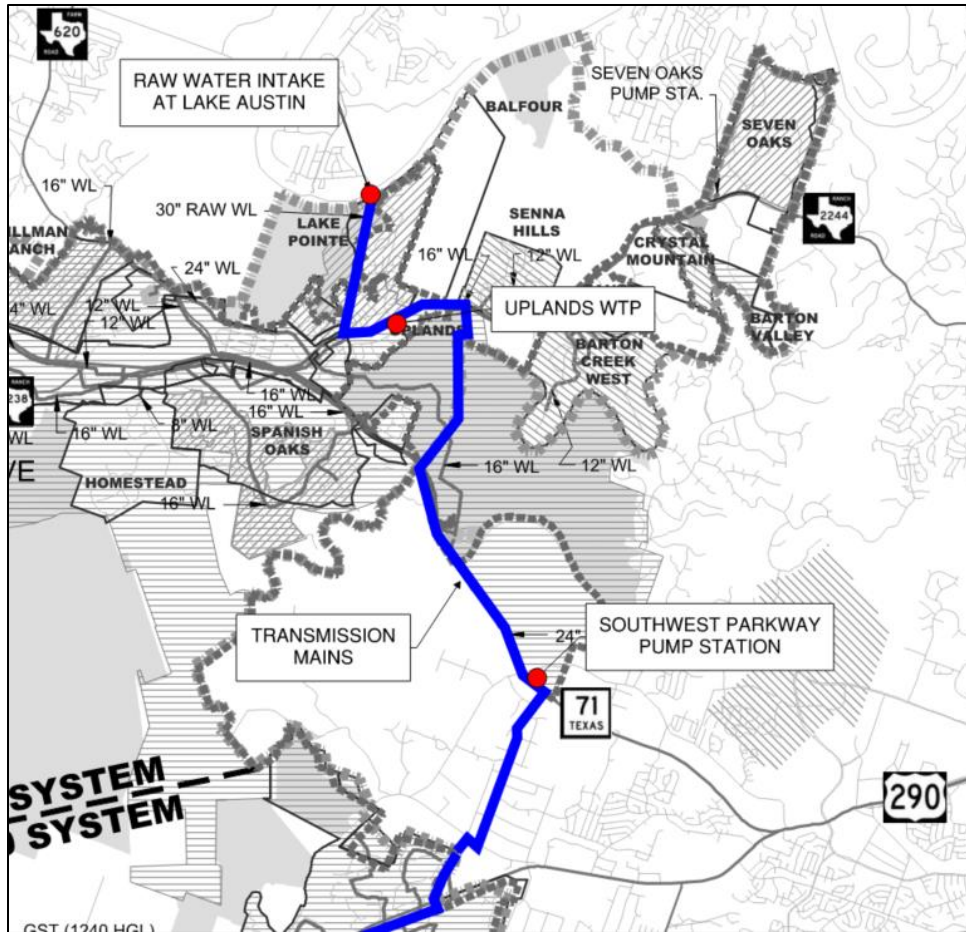


Overview



Water Routing to Reunion Ranch

- Raw water intake
- Uplands Water Treatment Plant
- Transmission Mains
- Southwest Parkway Pump Station
- County line Pump Station
- 1240 Elevated Storage Tank
- Pressure Reducing Valve and Meter
- Reunion Ranch Water System

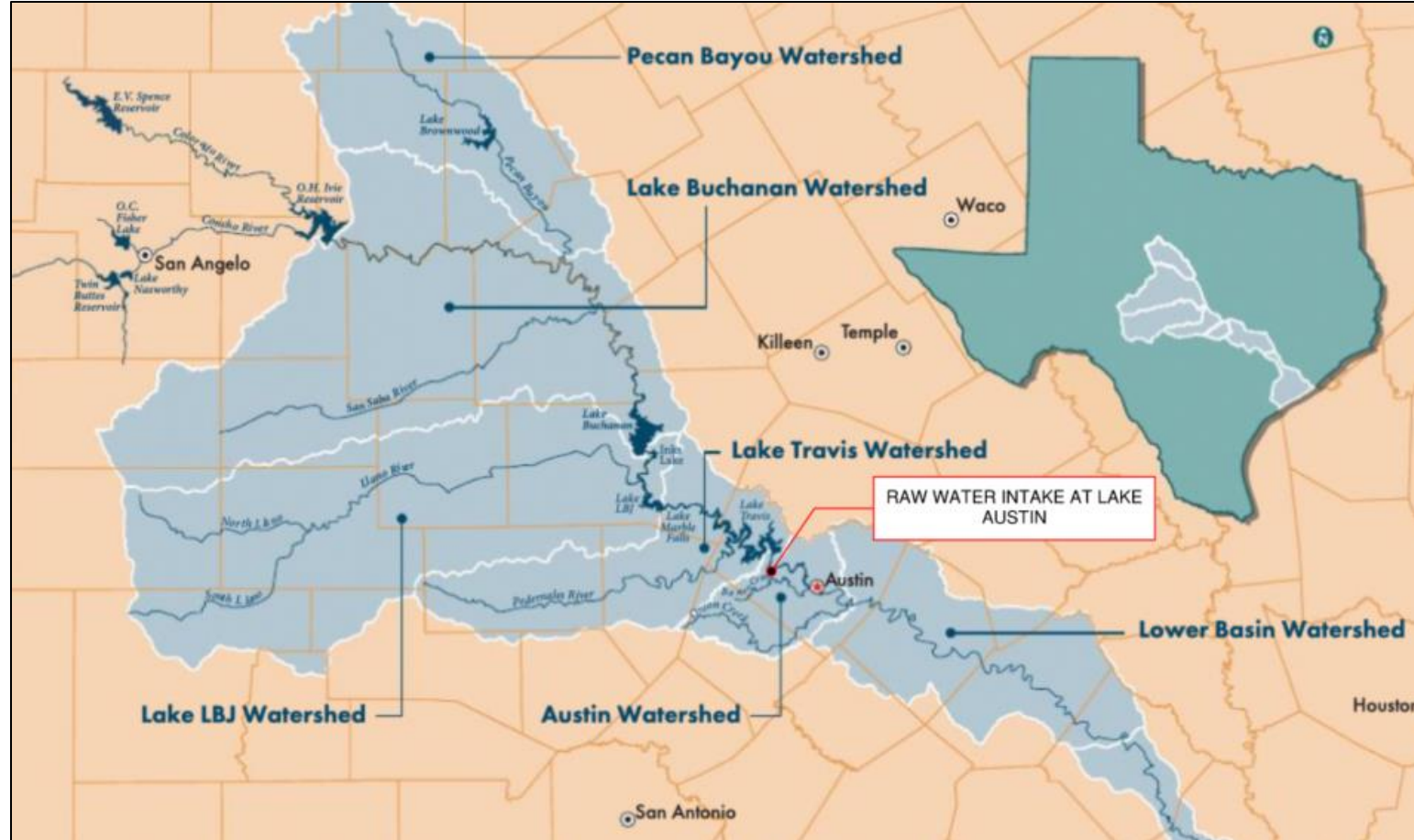


LCRA Water Supply

LCRA's Firm Water Customers

City of Austin
Barton Creek Lakeside
Village of Briarcliff
City of Burnet
City of Cedar Park
Corix Utilities
City of Cottonwood Shores
Deer Creek Water System
City of Dripping Springs (Headwaters MUD)
Dripping Springs WSC
City of Georgetown
City of Granite Shoals
Hays County WCID 1
Hays County WCID 2
City of Horseshoe Bay
Hurst Creek MUD
Jonestown WSC
Kingsland WSC
City of Lago Vista
Lakeway MUD
Lazy Nine MUD (Sweetwater)

City of Leander
City of Liberty Hill
Llano County MUD #1
Loop 360 WSC
City of Marble Falls
Pecan Utilities
City of Pflugerville
Reunion Ranch WCID
Rivercrest Water System
City of Round Rock
Senna Hills MUD
City of Sunrise Beach Village
Travis County MUD No. 4
Travis County MUD No. 10
Travis County MUD No. 12
Travis County MUD No. 18
Travis County WCID No. 17
Travis County WCID No. 18
Travis County WCID No. 20
Travis County WCID Point Venture
Windemere Oaks WSC
West Travis County Public Utility Authority



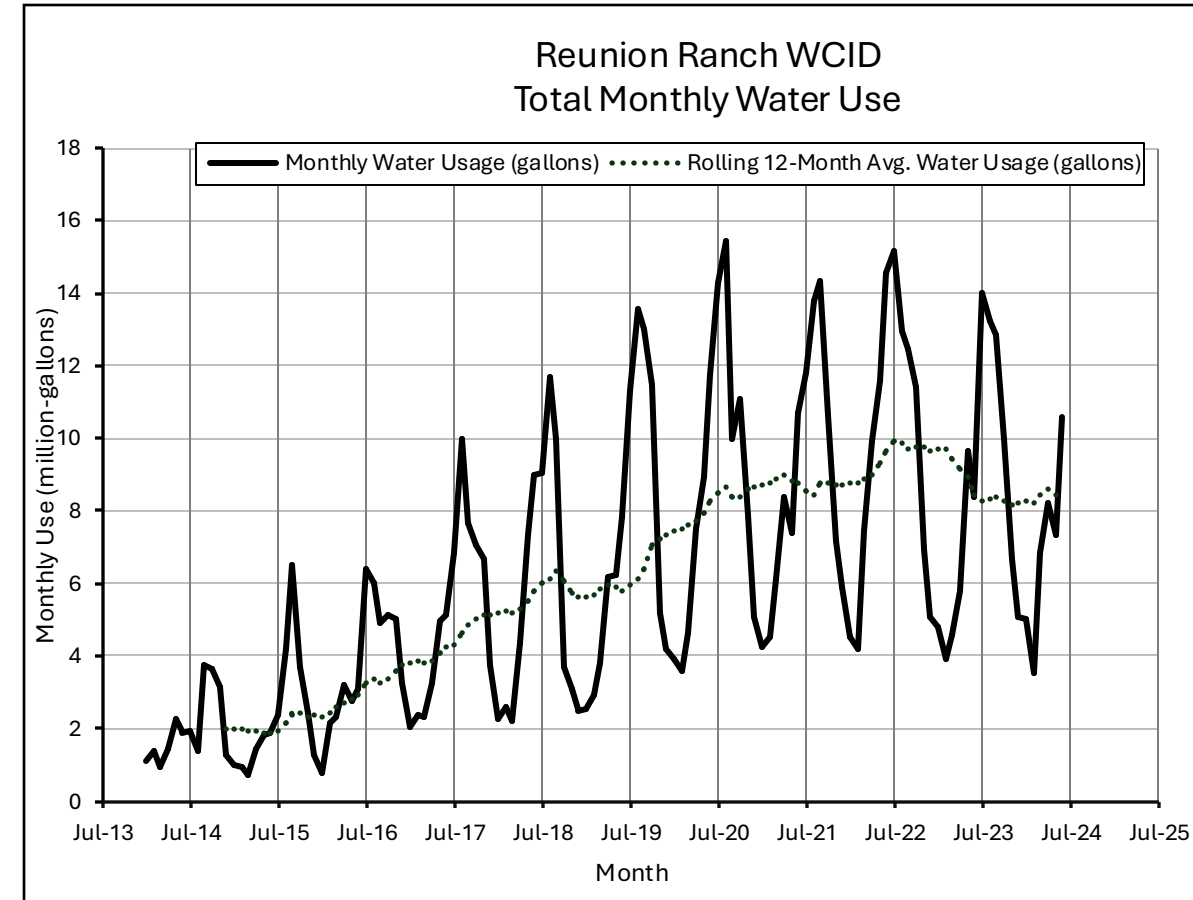
RRWCID Water System

- Number of connections
 - 518 - retail meters for residents
 - 1 - amenity center
 - 15 - irrigation meters

- 12 Monthly Rolling Data

| | Connections (LUE) | Avg. Monthly Volume (gal) | Monthly Avg. Per LUE (gal/LUE) |
|------|-------------------|---------------------------|--------------------------------|
| 2021 | 498 to 528 | 8,743,076 | 16,989 |
| 2022 | 529 to 535 | 9,422,952 | 17,682 |
| 2023 | 535 | 8,763,442 | 16,383 |

- Pipe sizes & length of pipes (total 7.44mi)
 - 6" - 2,169 LF
 - 8" - 29,469 LF
 - 12" - 7,501 LF
 - Fire hydrants: 71



LCRA & PUA Contracts

- Lower Colorado River Authority (LCRA) Raw Water Supply Contract

| Contract Maximum Annual Quantity (ac-ft) | Actual Water Use | | |
|--|------------------|-------------|------------------|
| | Year | (Acre-Feet) | (Million Gallon) |
| 350 | 2021 | 322 | 105 |
| | 2022 | 357 | 117 |
| | 2023 | 304 | 99 |

- West Travis County Public Utility Agency (WTCPUA) Contract

- To provide water purchased from LCRA limited to the max. day reservation 603,692 gpd
- Minimum pressure of 35 psi during non-emergency conditions

Plans for Water Conservation

- Water Conservation Plan
 - In accordance with LCRA's Water Conservation Plan Rules for Water Sale Contracts
 - Per connection use has decreased 4% per year over the last few years
 - Goal: reduce per connection use at rate of 5%
 - 210 Permit will allow use of treated effluent for irrigation, and reduce potable water via direct offset
- Drought Contingency Plan
 - Adopted to protect and preserve integrity of water supply facilities, minimizes impacts of water supply shortages or other supply emergency conditions
 - Permanent Water Use Restrictions
 - Failure to repair controllable leaks
 - Operating conditions for irrigation systems
 - Water use during irrigation
 - Details triggering criteria for initiation and termination of drought response stages