

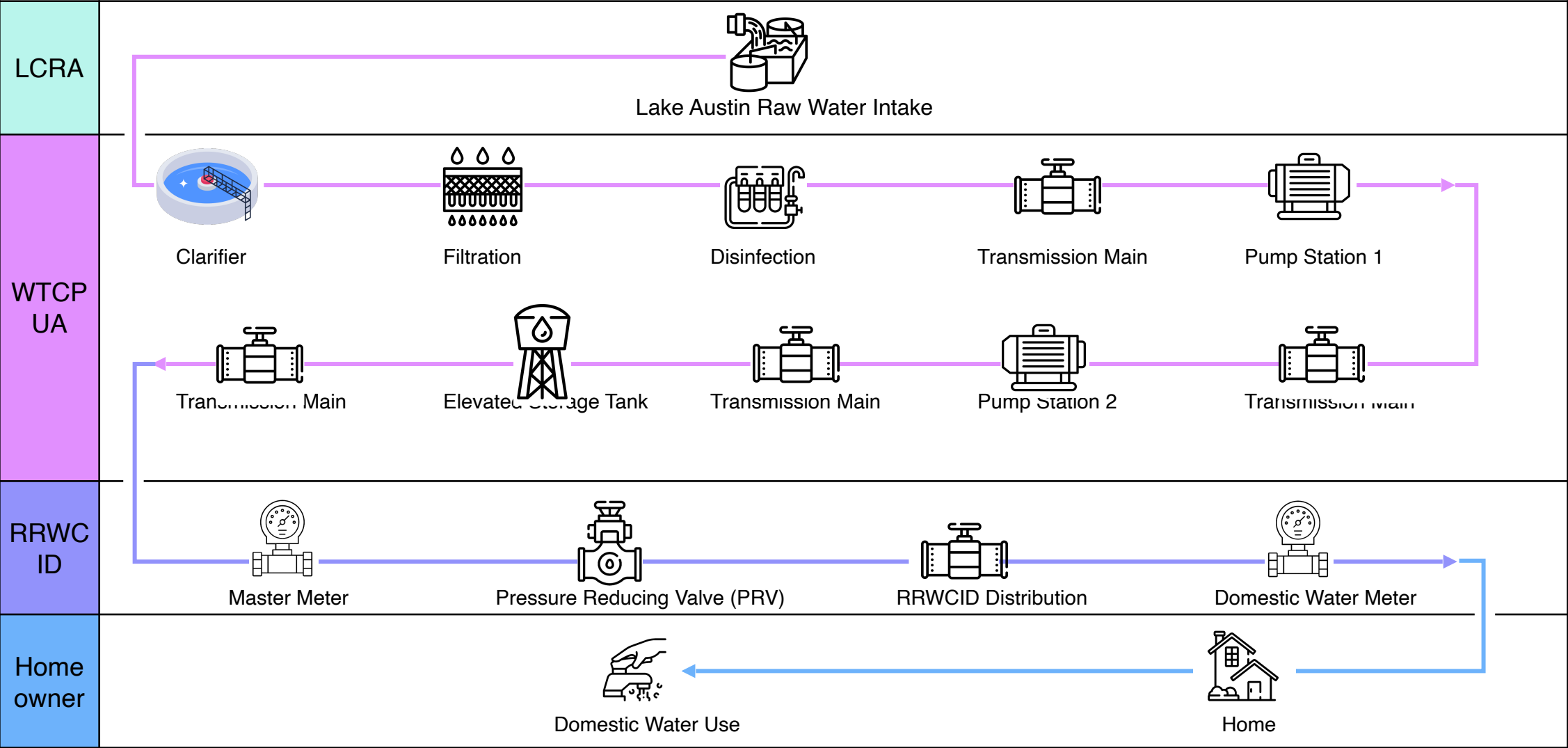
---

**Reunion Ranch**  
**Water Control and Improvement**  
**District**  
**Water System Overview**

Tuesday, August 20<sup>th</sup>, 2024

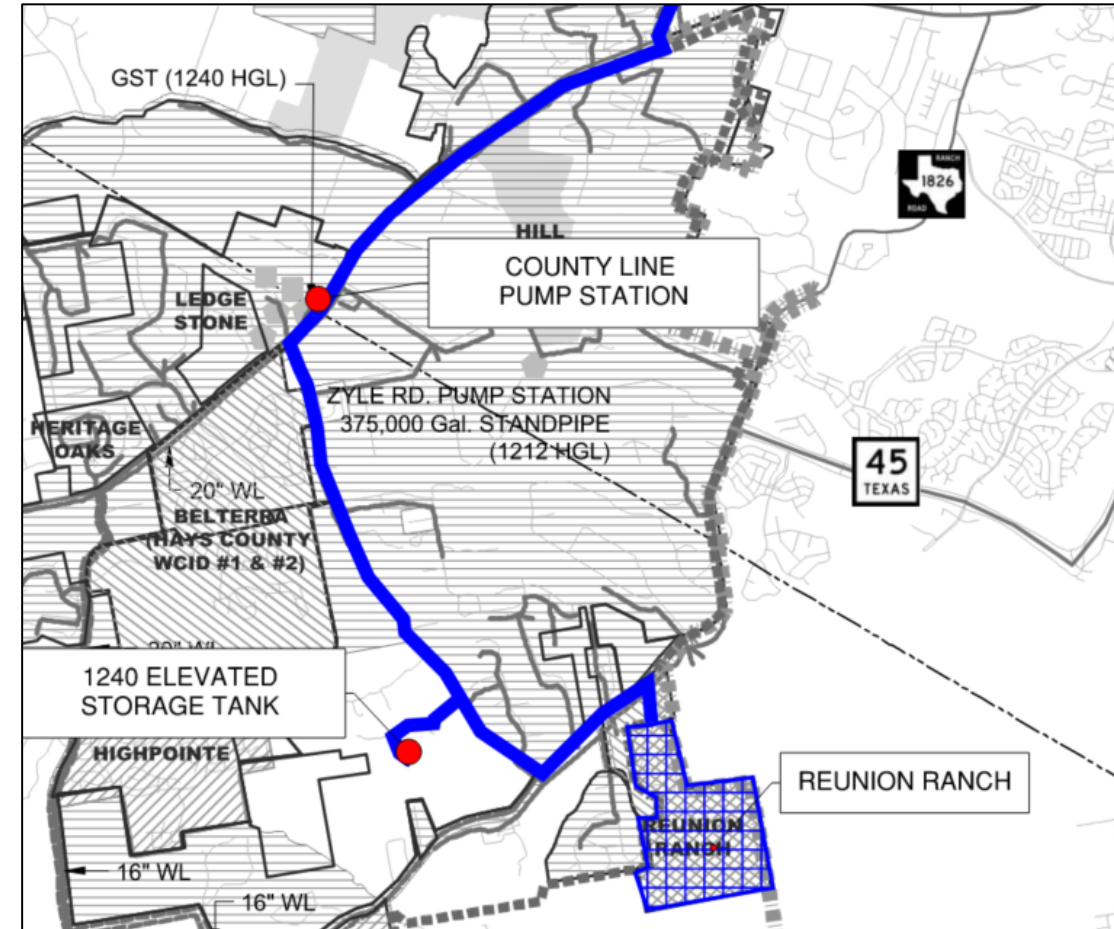
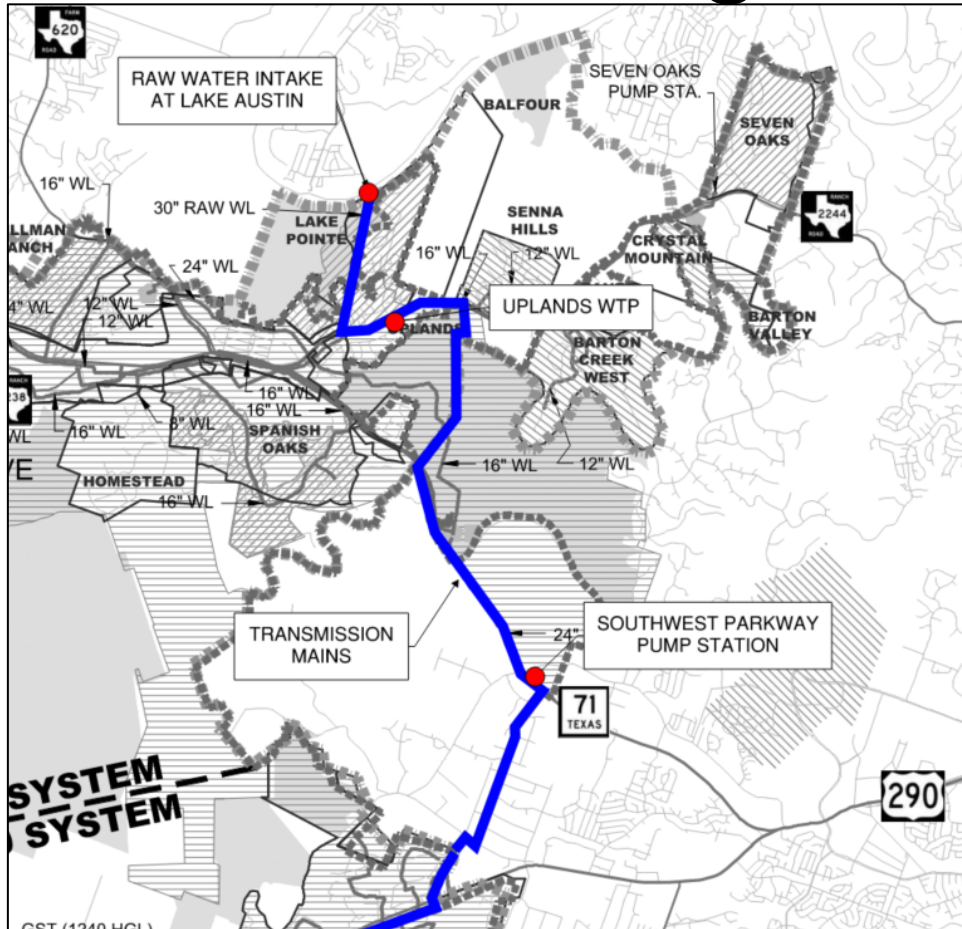


# Overview



# Water Routing to Reunion Ranch

- Raw water intake
- Uplands Water Treatment Plant
- Transmission Mains
- Southwest Parkway Pump Station
- County line Pump Station
- 1240 Elevated Storage Tank
- Pressure Reducing Valve and Meter
- Reunion Ranch Water System



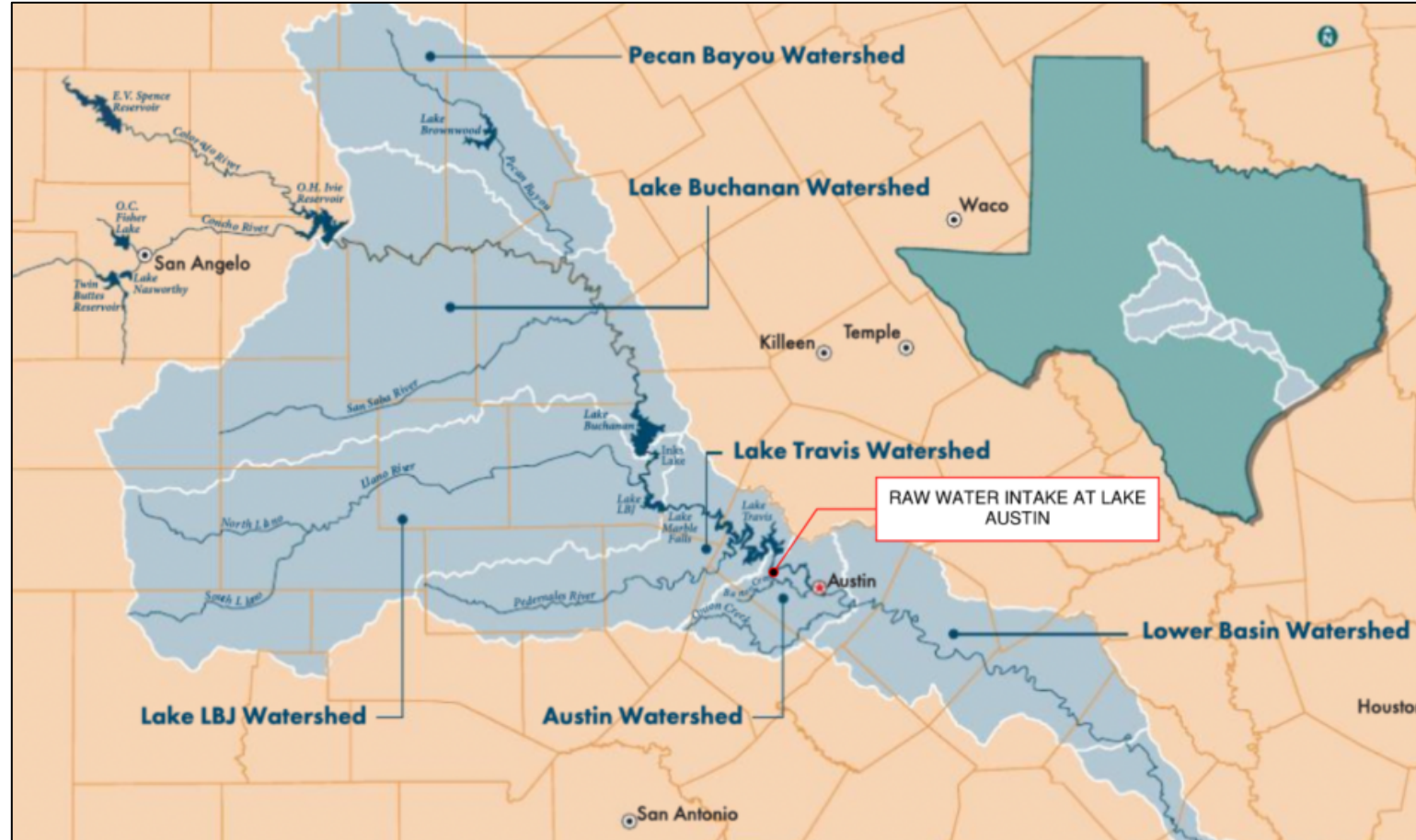
# LCRA Water Supply

## LCRA's Firm Water Customers

City of Austin  
Barton Creek Lakeside  
Village of Briarcliff  
City of Burnet  
City of Cedar Park  
Corix Utilities  
City of Cottonwood Shores  
Deer Creek Water System  
City of Dripping Springs (Headwaters MUD)  
Dripping Springs WSC  
City of Georgetown  
City of Granite Shoals  
Hays County WCID 1  
Hays County WCID 2  
City of Horseshoe Bay  
Hurst Creek MUD  
Jonestown WSC  
Kingsland WSC  
City of Lago Vista  
Lakeway MUD  
Lazy Nine MUD (Sweetwater)

Llano County MUD #1  
Loop 360 WSC  
City of Marble Falls  
Pecan Utilities  
City of Pflugerville  
Reunion Ranch WCID  
Rivercrest Water System  
City of Round Rock  
Senna Hills MUD  
City of Sunrise Beach Village  
Travis County MUD No. 4  
Travis County MUD No. 10  
Travis County MUD No. 12  
Travis County MUD No. 18  
Travis County WCID No. 17  
Travis County WCID No. 18  
Travis County WCID No. 20  
Travis County WCID Point Venture  
Windemere Oaks WSC  
West Travis County Public Utility Authority

City of Leander  
City of Liberty Hill



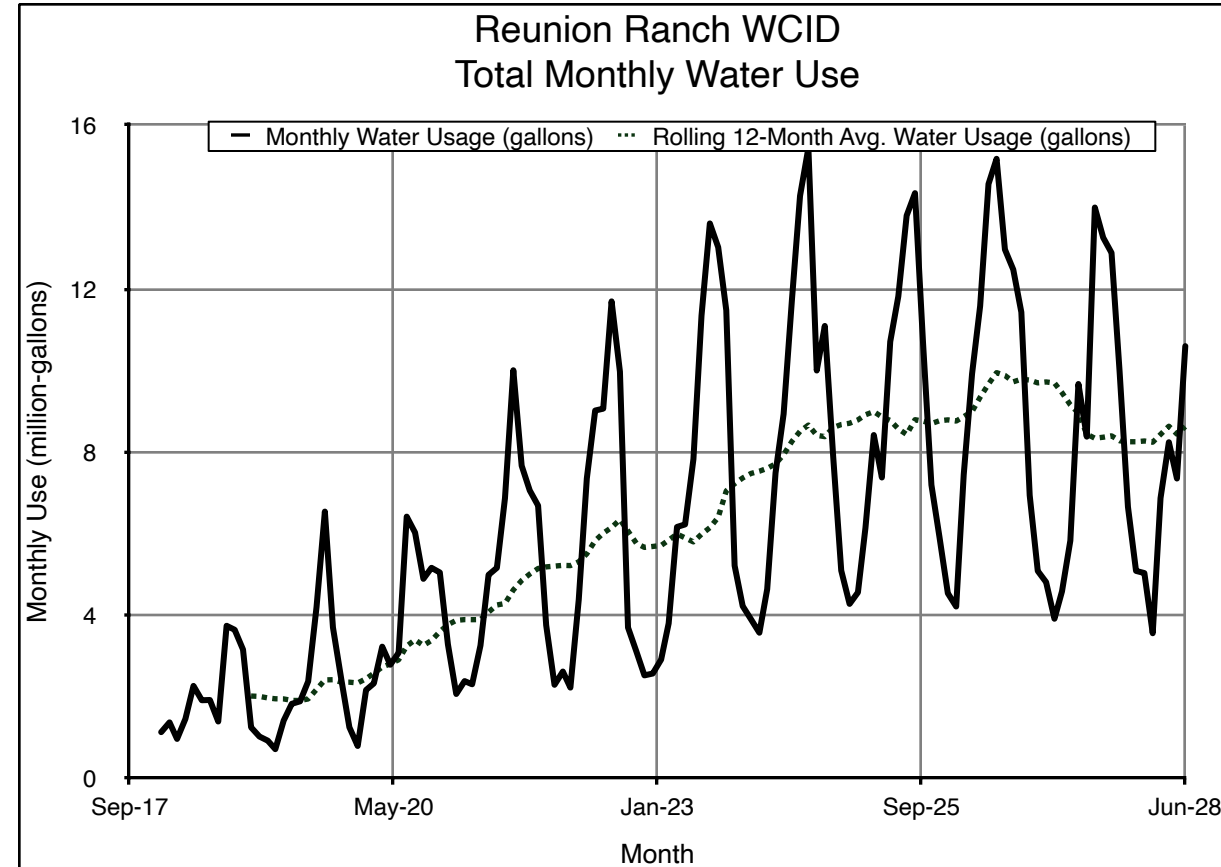
# RRWCID Water System

- Number of connections
  - 518 - retail meters for residents
  - 1 - amenity center
  - 15 - irrigation meters

- 12 Monthly Rolling Data

|      | Connections (LUE) | Avg. Monthly Volume (gal) | Monthly Avg. Per LUE (gal/LUE) |
|------|-------------------|---------------------------|--------------------------------|
| 2021 | 498 to 528        | 8,743,076                 | 16,989                         |
| 2022 | 529 to 535        | 9,422,952                 | 17,682                         |
| 2023 | 535               | 8,763,442                 | 16,383                         |

- Pipe sizes & length of pipes (total 7.44mi)
  - 6" - 2,169 LF
  - 8" - 29,469 LF
  - 12" - 7,501 LF
  - Fire hydrants: 71



# LCRA & PUA Contracts

- Lower Colorado River Authority (LCRA) Raw Water Supply Contract

| Contract Maximum Annual Quantity (ac-ft) | Actual Water Use |             |                  |
|--|------------------|-------------|------------------|
|  | Year             | (Acre-Feet) | (Million Gallon) |
| 350                                      | 2021             | 322         | 105              |
|  | 2022             | 357         | 117              |
|  | 2023             | 304         | 99               |

- West Travis County Public Utility Agency (WTCPUA) Contract
  - To provide water purchased from LCRA limited to the max. day reservation 603,692 gpd
  - Minimum pressure of 35 psi during non-emergency conditions

# Plans for Water Conservation

- Water Conservation Plan
  - In accordance with LCRA's Water Conservation Plan Rules for Water Sale Contracts
  - Per connection use has decreased 4% per year over the last few years
  - Goal: reduce per connection use at rate of 5%
  - 210 Permit will allow use of treated effluent for irrigation, and reduce potable water via direct offset
- Drought Contingency Plan
  - Adopted to protect and preserve integrity of water supply facilities, minimizes impacts of water supply shortages or other supply emergency conditions
  - Permanent Water Use Restrictions
    - Failure to repair controllable leaks
    - Operating conditions for irrigation systems
    - Water use during irrigation
  - Details triggering criteria for initiation and termination of drought response stages

