



Reunion Ranch WCID
General Manager Reports for the month of
December 2021
Board Meeting: December 21st, 2021

Reviewed By: Kristi Hester
Date:

Memorandum for: Board of Directors Reunion Ranch WCID
From: Kristi Hester
Date: 12/14/21
Subject: General Manager's Executive Summary

Operations and Maintenance Report:

A. Administrative

- Completed annual TCEQ soil report results have been sent to the State. All passed

B. WWTP/Collection System

- All facilities are in compliance for November; plant at 71.6% capacity with new facilities; total flows 1.7MG; average flows 57,000 GPD
- Influent was high and SBR 2 was flowing into contact chamber, needed WWTS haul to get basins back in service. When press was set up 6 to 8 hours in one day the water from the press pumps to the lift station causing the basin levels to raise which caused SMR to go into storm mode to protect the lift station from overflowing
- Effluent pump had a high level alarm and was in Storm mode 3, needed service from Alterman. Relay fault on effluent lift station pump which caused the plant not to decant, relay was replaced.
- Completed winterization of facilities, see attached check list

C. Wastewater Grinder Stations – nothing to report

D. Effluent Irrigation System and Fields – nothing to report

E. Distribution & Collection and Lift Stations

- Water accountability was 89.3% in November

F. Billing Adjustments – nothing to report

G. Delinquencies

- Mailed 17 Delinquent Letters; Hung 0 Red Tags

H. Customer Meter Issues – nothing to report

I. Customer and Resident Complaints

- Notified HOA of Jayne Cove road debris left by playground contractor, All Aquatics

J. Stormwater Conveyance and Pond Maintenance

- Inspected Heyl Homes berm in The Reserve with Engineers; HOA standing by for EC measures to implement
- Pond 2-2 on Mary Elise – removed brush, no erosion issues found
- Pond 2-4 on Katie Drive – removed sediment from inlet
- Working with Engineers on quotes for pond aeration and sediment removal

K. Landscaping – nothing to report

L. Water Quality Notices to Residents – nothing to report

M. Out of District Water/Wastewater Requests – nothing to report

N. District Property and Greenspace Use – nothing to report

O. Maintenance Access – nothing to report

P. Cyber Security – nothing to report

Q. Sale of Sludge Box

Construction – See attached EC Reports

Current Items Requiring Board Approval:

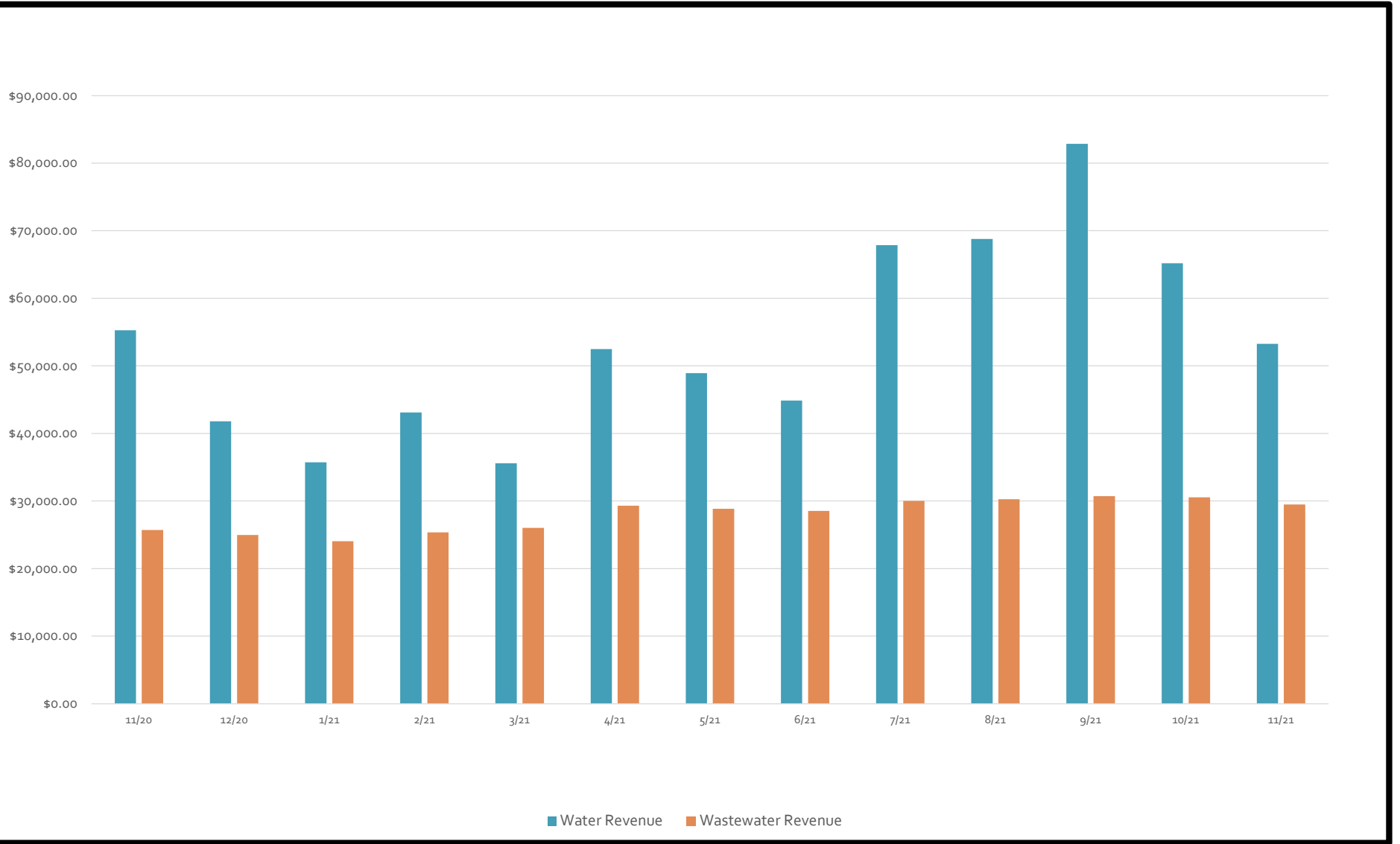
Vendor	Amount	Budgeted	Description	Work Order #



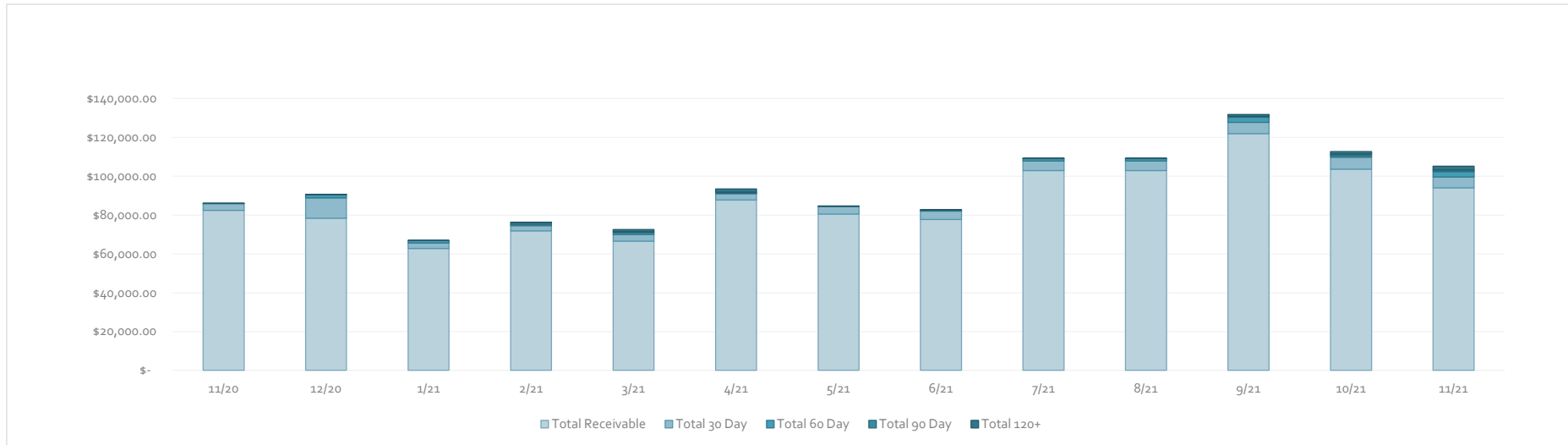
Billing Summary

Description	Connections		Variance
	Nov-20	Nov-21	
Residential	474	512	38
Commercial - HOA	14	14	
Hydrant	0	-	-
Tracking	1	1	-
Reclaimed	-	-	
Total Number of Accounts Billed	489	527	38
	Consumption		
Residential	7,111,000	6,742,000	(369,000)
Commercial - HOA	1,450,000	1,568,000	118,000
Hydrant	-	-	-
Tracking	332,000	-	(332,000)
Reclaimed	-	-	
Total Gallons Consumed	8,893,000	8,310,000	(583,000)
	Average Consumption		
Residential	15,002	13,168	(1,834)
Commercial - HOA	103,571	112,000	-
Hydrant	0	0	500
Tracking	332,000	-	(332,000)
Reclaimed	-	-	-
Avg Water Use for Accounts Billed	18,186.09	15,768.50	(2,418)
Total Billed	82,783	84,326	1,543
Total Aged Receivables	(344)	8,630	8,974
Total Receivables	82,439	92,956	10,517

12 Billing Month History Revenue by Category



12 Month Accounts Receivable and Collections Report



Date	Total Receivable	Total 30 Day	Total 60 Day	Total 90 Day	Total 120+
11/20	\$ 82,439.31	\$ 3,512.35	\$ 38.02	\$ -	\$ 150.00
12/20	\$ 78,484.70	\$ 10,467.78	\$ 1,635.25	\$ 4.25	\$ 150.00
1/21	\$ 62,838.23	\$ 2,826.80	\$ 1,230.94	\$ -	\$ 150.00
2/21	\$ 71,868.27	\$ 2,651.64	\$ 710.54	\$ 963.56	\$ 150.00
3/21	\$ 66,589.70	\$ 3,275.28	\$ 1,024.60	\$ 514.93	\$ 1,113.56
4/21	\$ 87,819.19	\$ 3,097.37	\$ 518.88	\$ 445.96	\$ 1,628.49
5/21	\$ 80,520.21	\$ 3,945.96	\$ 72.97	\$ -	\$ 150.00
6/21	\$ 77,784.01	\$ 4,302.55	\$ 438.49	\$ 72.97	\$ 150.00
7/21	\$ 102,933.47	\$ 4,971.98	\$ 1,167.63	\$ 85.28	\$ 150.00
8/21	\$ 102,933.47	\$ 4,971.98	\$ 1,167.63	\$ 85.28	\$ 150.00
9/21	\$ 121,915.16	\$ 5,867.72	\$ 2,597.16	\$ 515.36	\$ 883.24
10/21	\$ 103,732.02	\$ 6,037.42	\$ 874.22	\$ 794.69	\$ 1,284.78
11/21	\$ 94,061.57	\$ 5,496.67	\$ 2,920.03	\$ 716.74	\$ 2,046.95

Board Consideration to Write Off	\$0.00
Board Consideration Collections	\$0.00
Delinquent Letter Mailed	17
Delinquent Tags Hung	N/A
Disconnects for Non Payment	N/A



Water Production and Quality

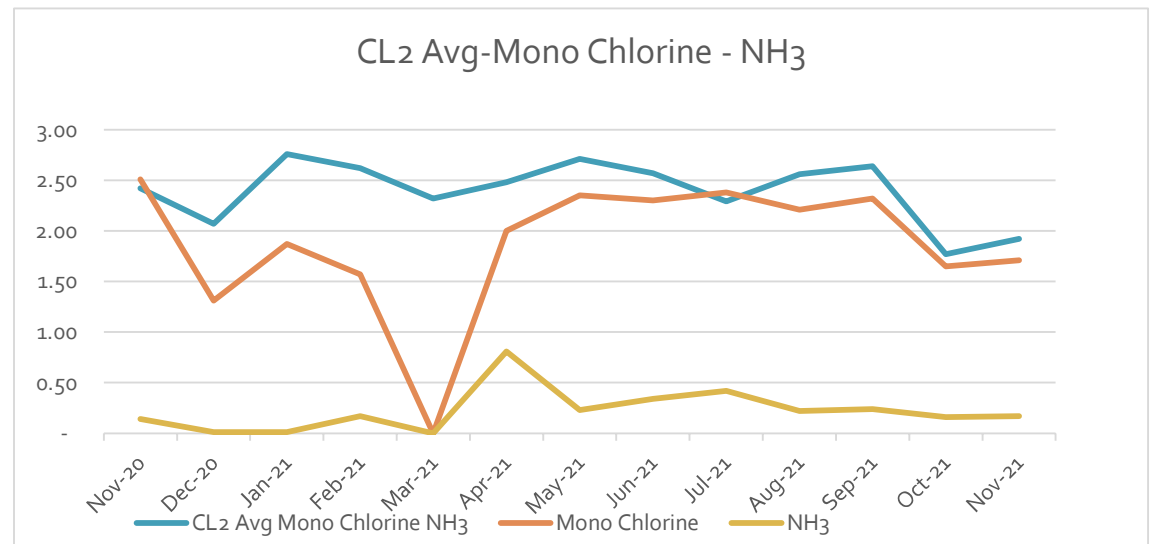
Water Quality Monitoring

Current Annual Avg

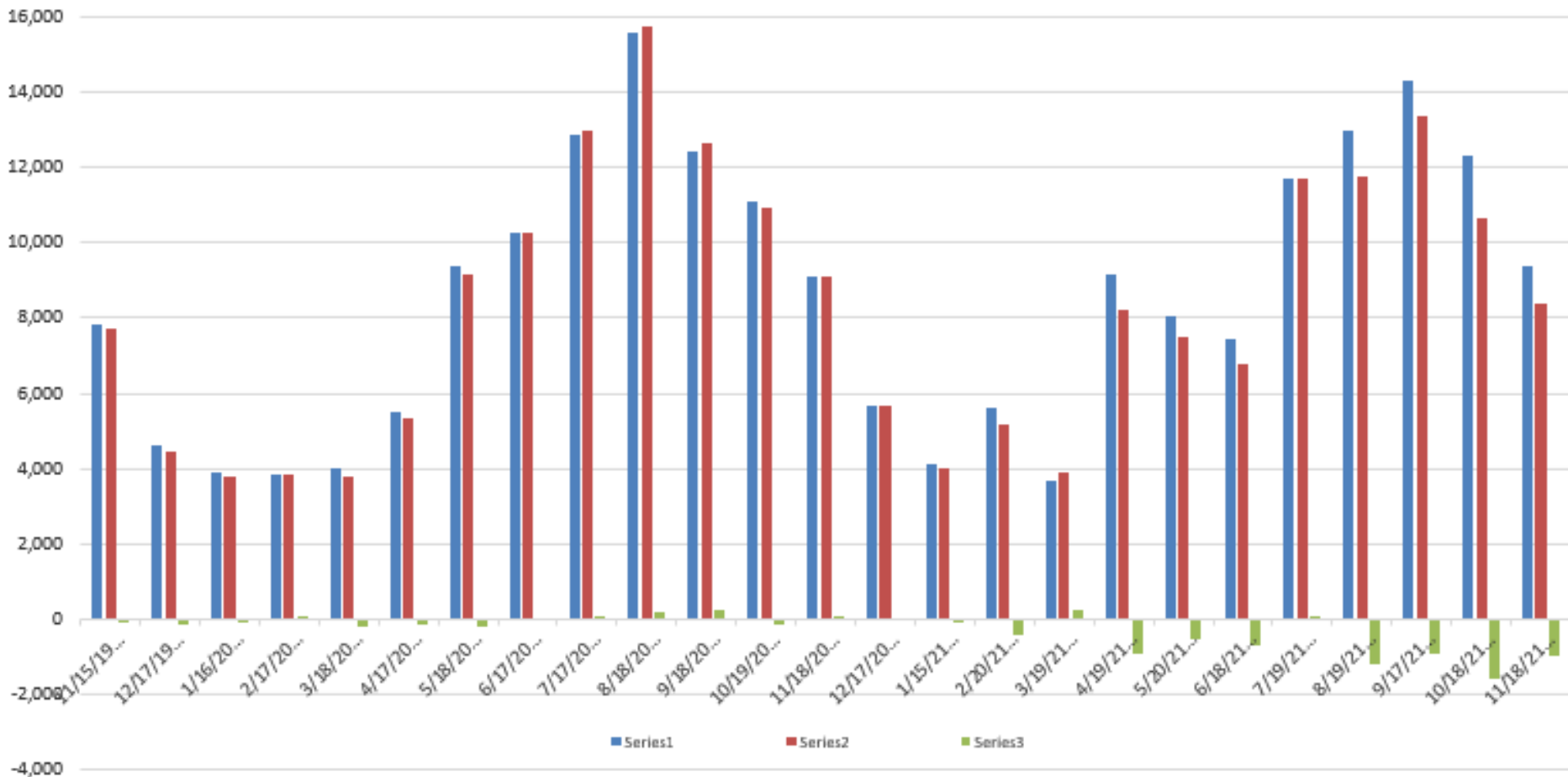
State Requirements Must Be Above .50

2.39

Date	CL2 Avg	Mono Chlorine	NH3
Nov-20	2.42	2.51	0.14
Dec-20	2.07	1.31	0.01
Jan-21	2.76	1.87	0.01
Feb-21	2.62	1.57	0.17
Mar-21	2.32	0.00	0.00
Apr-21	2.48	2.00	0.81
May-21	2.71	2.35	0.23
Jun-21	2.57	2.30	0.34
Jul-21	2.29	2.38	0.42
Aug-21	2.56	2.21	0.22
Sep-21	2.64	2.32	0.24
Oct-21	1.77	1.65	0.16
Nov-21	1.92	1.71	0.17



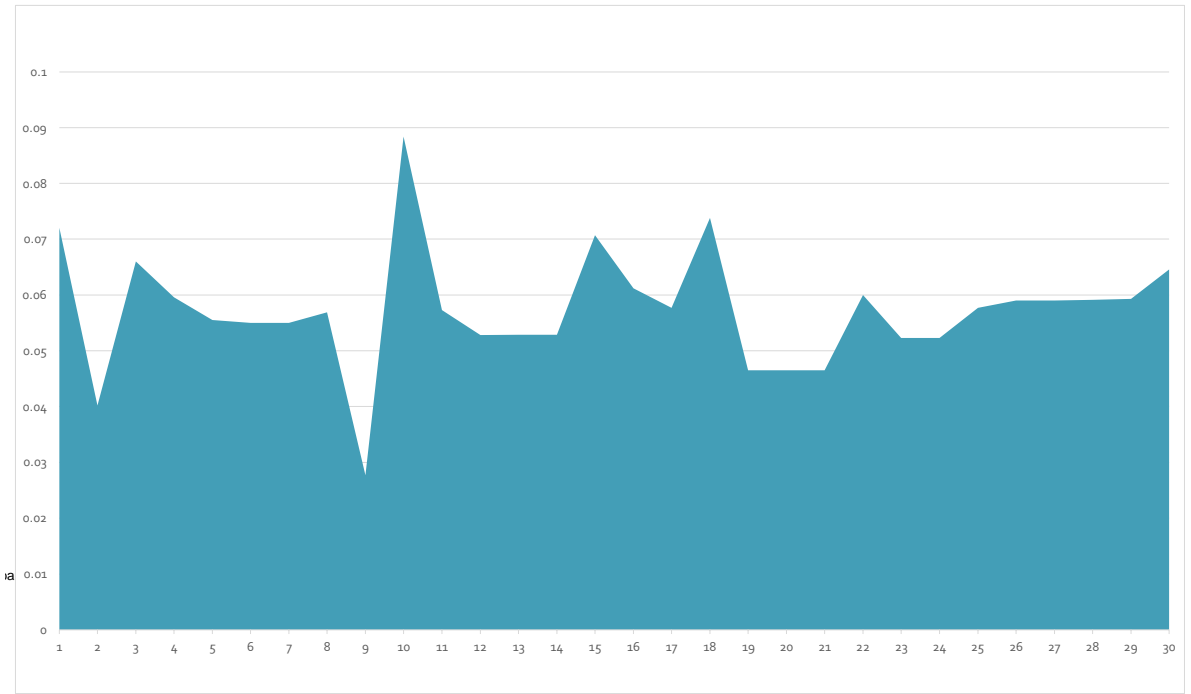
Water Accountability Report



Month	Read Date	Number of Connections	Master Meters	Billed Use	Flushing /Other	Gal.s Loss (-)	% Loss	Accounted For
November 19	11/15/19	415	7,813	7,702	13	(98)	-1.25%	98.75%
December 19	12/17/19	424	4,622	4,461	5	(156)	-3.38%	96.62%
January 20	1/16/20	426	3,910	3,792	10	(108)	-2.77%	97.23%
February 20	2/17/20	432	3,820	3,840	9	29	0.75%	100.75%
March 20	3/18/20	443	3,996	3,793	8	(195)	-4.89%	95.11%
April 20	4/17/20	453	5,479	5,326	7	(146)	-2.66%	97.34%
May 20	5/18/20	459	9,377	9,157	8	(212)	-2.26%	97.74%
June 20	6/17/20	463	10,260	10,251	7	(2)	-0.10%	99.99%
July 20	7/17/20	468	12,895	12,956	1	62	0.48%	100.48%
August 20	8/18/20	474	15,588	15,754	8	174	1.12%	101.12%
September 20	9/18/20	481	12,398	12,644	8	254	2.05%	102.05%
October 20	10/19/20	485	11,108	10,956	7	(145)	-1.31%	98.69%
November 20	11/18/20	489	9,106	9,129	8	31	0.34%	100.34%
December 20	12/17/20	496	5,686	5,658	0	(20)	-0.48%	99.52%
January 21	1/15/21	498	4,118	3,998	7	(113)	-2.75%	97.25%
February 21	2/20/21	502	5,619	5,175	0	(444)	-7.90%	92.10%
March 21	3/19/21	504	3,695	3,920	15	240	6.49%	106.49%
April 21	4/19/21	506	9,134	8,227	5	(902)	-9.88%	90.12%
May 21	5/20/21	506	8,030	7,512	0	(518)	-6.45%	93.55%
June 21	6/18/21	516	7,447	6,752	7	(688)	-9.24%	90.76%
July 21	7/19/21	519	11,704	11,712	7	15	0.12%	100.12%
August 21	8/19/21	523	12,965	11,748	7	(1,210)	-9.33%	90.67%
September 21	9/17/21	524	14,381	13,352	11	(1,018)	-7.08%	92.92%
October 21	10/18/21	526	12,125	10,668	10	(1,447)	-11.94%	88.06%
November 21	11/18/21	527	9,390	8,376	14	(1,000)	-10.65%	89.35%



Wastewater Flows for the Month of November



For the Month of November

Flow WWTP (Avg.)	0.08 MGD	0.057 MGD	Yes	71.6%
BOD (Avg)	20 mg/L	3.8 mg/L	Yes	
TSS (Avg)	20 mg/L	2.0 mg/L	Yes	
Chlorine Residual (Min)	1.0 mg/L	2.8 mg/L	Yes	
PH (Min)	6.0 Std Units	8.09 Std Units	Yes	
PH (Max)	9.0 Std Units	8.09 Std Units	<u>Yes</u>	

Reunion Ranch WCID Wastewater Flow Historical

* Water Leak at Rec Center

	Connections	Total Flows	Average	Avg Flow Per Connection	WWTP Capacity %
Nov-21	527	1,718,400	57,000	108	71%
Oct-21	526	1,689,800	55,000	105	69%
Sep-21	524	1,274,000	42,000	80	84%
Aug-21	523	1,457,000	47,000	90	94%
Jul-21	519	1,391,000	45,000	87	90%
Jun-21	516	1,387,000	46,000	89	92%
May-21	506	1,370,000	44,000	87	88%
Apr-21	506	1,189,000	40,000	79	80%
Mar-21	504	1,472,000	48,000	95	96%
Feb-21	502	1,234,000	44,000	88	88%
Jan-21	498	1,640,000	53,000	106	106%
TOTALS		15,822,200	47,363.64	92	87%
Dec-20	496	1,715,000	55,000	111	110%
Nov-20	489	1,466,000	49,000	100	98%
Oct-20	485	1,543,000	50,000	103	100%
Sep-20	481	1,511,000	50,000	104	100%
Aug-20	474	1,661,000	54,000	114	108%
Jul-20	468	1,542,000	50,000	107	100%
Jun-20	463	1,594,000	53,100	115	106%
May-20	459	1,545,000	49,800	108	100%
Apr-20	453	1,372,000	46,000	102	92%
Mar-20	443	1,344,000	43,000	97	86%
Feb-20	432	1,156,000	40,000	93	80%
Jan-20	426	1,129,000	36,000	85	72%
TOTALS		17,578,000	47,991.67	103	96%
Dec-19	424	1,171,000	38,000	90	76%
Nov-19	415	1,103,000	37,000	89	74%
Oct-19	407	1,167,000	38,000	93	76%
Sep-19	399	1,144,000	39,000	98	78%
Aug-19	389	1,306,000	42,000	108	84%
Jul-19	381	1,204,000	39,000	102	78%
Jun-19	371	1,038,000	35,000	94	70%
May-19	363	1,139,000	37,000	102	74%
Apr-19	358	1,017,000	33,000	92	66%
Mar-19	353	933,000	30,000	85	60%
Feb-19	347	807,000	29,000	84	58%
Jan-19	327	1,073,000	35,000	107	70%
TOTALS		13,102,000	36,000	95	72%



Reunion Ranch WCID
C/O Bott & Douthitt
P. O. Box 2445
Round Rock, Texas 78680-2445-45

By Certified Mail
No. 7020 1290 0000 5863 9383

CRITICAL NOTICE REGARDING SENATE BILL 3 AND CRITICAL LOAD DESIGNATIONS

You are receiving this letter as an identified Water Utility registered with the Public Utility Commission of Texas (PUCT) within the counties served by Pedernales Electric Cooperative, Inc. (PEC or Cooperative).

PEC is committed to its Core Value of Service, and provides the following information to affected water utilities resulting from Senate Bill 3 and changes to Texas Water Code (TWC) Section 13.1394, passed during the 2021 Legislative Session.

PEC understands that affected water utilities must now prepare and implement an Emergency Preparedness Plan (EPP) to provide water during an extended power outage greater than 24 hours. This information is provided in order to help affected water utilities understand the services PEC is able to provide to its members, as well as an explanation of possible service limitations.

CRITICAL INFORMATION FOR WATER UTILITIES

PEC DOES NOT GUARANTEE UNINTERRUPTED SERVICE

PEC does not guarantee an uninterrupted, regular, or continuous power supply. Section 300.9.6 of PEC's Tariff and Business Rules for Electric Service (Tariff) addresses Continuity of Service, and if continuous service is required, the Member must install the necessary equipment. (See: [https://www.pec.coop/wp-content/uploads/tariff/Tariff and Business Rules.pdf](https://www.pec.coop/wp-content/uploads/tariff/Tariff_and_Business_Rules.pdf))

CRITICAL LOAD DESIGNATION

PEC classifies its nonresidential locations into three categories for its Critical Load Program:

1. Public Safety – Critical water and wastewater facilities are within this category
2. Industrial
3. Natural gas infrastructure

Locations registered in PEC's Critical Load Program are not exempt from planned or unplanned service interruptions or ERCOT-directed load shed activities. When planned outages or service interruptions for nonpayment are scheduled, the Cooperative will attempt to provide advance notice so preparations can be made. For unplanned outages, the Cooperative will prioritize Critical Load Program participants for restoration as much as practicable. This Program does not guarantee priority electric service restoration, and locations registered in the Program are not exempt from planned service interruptions.



During ERCOT-directed load shed events, locations registered in the Critical Load Program are placed in a latter group on PEC's load shed rotation list, but will still be subject to load shed.

Additional information on PEC's Critical Load Program is available at <https://www.pec.coop/your-service/critical-load-program>. PEC's Commercial & Industrial Accounts team can answer additional questions, and may be contacted by emailing CommercialAccounts@peci.com.

PEC has received information from your entity, however, please ensure you have completed the proper forms and requirements for PEC's Critical Load Application.

NON-STANDARD FACILITIES DESIGN PROCESS & MEMBER RESPONSIBILITIES

Affected water utilities may have several options when implementing their EPP, including measures that range from obtaining various forms of back-up generation, hardening the electric transmission and distribution system serving the affected water utility, or securing dedicated electrical feeds for the affected water utility.

Section 400.9 of PEC's Tariff addresses the provision of non-standard delivery service and facilities, which include in part, but are not limited to, facilities necessary to provide dual feed, automatic and manual transfer switches, service through more than one Point of Delivery, redundant facilities, and non-standard facilities in excess of those normally required for service.

Members or Applicants requesting non-standard facilities will be responsible for all costs associated with the engineering, installation, maintenance, and material costs required to provide and maintain these non-standard facilities. The Cooperative reserves the right to convert or deny non-standard facilities installations if the Cooperative determines that such service may have an adverse impact on the Cooperative's Delivery System or service provided to another Member. (See: [https://www.pec.coop/wp-content/uploads/tariff/Tariff and Business Rules.pdf](https://www.pec.coop/wp-content/uploads/tariff/Tariff%20and%20Business%20Rules.pdf))

Member water utilities may elect to compare costs for modifications to PEC's existing facilities installed to serve the site to the other EPP options, and PEC has two options for obtaining a cost estimate for non-standard services.

1. Member water utilities may hire a PEC prequalified engineering firm to design alternative electrical configurations to serve their facilities. PEC will review those designs, and the Member is responsible for paying all of PEC's costs for that review as noted below pursuant to Tariff Sections 400.16 and 500.4.
2. PEC may prepare a high-level estimate pursuant to Tariff Sections 400.16 and 500.4, which addresses Planning Design Fees. The Planning Redesign Fee is \$500 or actual cost, whichever greater. The Member water utility must pay \$500 in advance, and will be billed for any actual costs that exceed \$500. Member will be responsible for all actual costs.



NON-STANDARD FACILITIES – LIMITATIONS DURING LOAD SHED EVENTS

While facilities such as dual feeds, automatic and manual transfer switches, service through more than one Point of Delivery, and redundant facilities are generally effective to ensure service during normal planned and unplanned outages, in emergency events, including ERCOT-directed load shed (given the uncertainty around potential severity of load shed conditions), PEC cannot guarantee the full operation and availability of installed non-standard facilities, including use of multiple different feeders.

NON-STANDARD FACILITIES ONGOING MEMBER RESPONSIBILITIES

Non-standard facilities essentially reserve capacity on PEC's systems that may otherwise be used to serve other Members. PEC reserves the right, and intends to review these non-standard facilities during future rate analysis to ensure all costs associated with such facilities are appropriately assigned through adequate ongoing rates.

Section 400.9 of PEC's Tariff states neither a Member nor an Applicant may perform service or maintenance to equipment located on the Cooperative's Delivery System. PEC will perform annual maintenance on all non-standard equipment at the sole expense of the Member. If all or any part of non-standard equipment must be replaced, the cost for replacement will be the sole responsibility of the Member. If a Member requests removal of non-standard equipment, the cost for removal will be the sole responsibility of the Member.

CONTACT INFORMATION

For additional inquiries into the information provided, you may reach out to the Cooperative's Commercial & Industrial Accounts team by emailing CommercialAccounts@peci.com or call 888-554-4732, Extension 5049.

Account 3001313424



Travis County WCID
C/O Bott & Douthitt
P. O. Box 2445
Round Rock, Texas 78680-2445-45

By Certified Mail
No. 7020 1290 0000 5863 9444

CRITICAL NOTICE REGARDING SENATE BILL 3 AND CRITICAL LOAD DESIGNATIONS

You are receiving this letter as an identified Water Utility registered with the Public Utility Commission of Texas (PUCT) within the counties served by Pedernales Electric Cooperative, Inc. (PEC or Cooperative).

PEC is committed to its Core Value of Service, and provides the following information to affected water utilities resulting from Senate Bill 3 and changes to Texas Water Code (TWC) Section 13.1394, passed during the 2021 Legislative Session.

PEC understands that affected water utilities must now prepare and implement an Emergency Preparedness Plan (EPP) to provide water during an extended power outage greater than 24 hours. This information is provided in order to help affected water utilities understand the services PEC is able to provide to its members, as well as an explanation of possible service limitations.

CRITICAL INFORMATION FOR WATER UTILITIES

PEC DOES NOT GUARANTEE UNINTERRUPTED SERVICE

PEC does not guarantee an uninterrupted, regular, or continuous power supply. Section 300.9.6 of PEC's Tariff and Business Rules for Electric Service (Tariff) addresses Continuity of Service, and if continuous service is required, the Member must install the necessary equipment. (See: <https://www.pec.coop/wp-content/uploads/tariff/Tariff and Business Rules.pdf>)

CRITICAL LOAD DESIGNATION

PEC classifies its nonresidential locations into three categories for its Critical Load Program:

1. Public Safety – Critical water and wastewater facilities are within this category
2. Industrial
3. Natural gas infrastructure

Locations registered in PEC's Critical Load Program are not exempt from planned or unplanned service interruptions or ERCOT-directed load shed activities. When planned outages or service interruptions for nonpayment are scheduled, the Cooperative will attempt to provide advance notice so preparations can be made. For unplanned outages, the Cooperative will prioritize Critical Load Program participants for restoration as much as practicable. This Program does not guarantee priority electric service restoration, and locations registered in the Program are not exempt from planned service interruptions.



During ERCOT-directed load shed events, locations registered in the Critical Load Program are placed in a latter group on PEC's load shed rotation list, but will still be subject to load shed.

Additional information on PEC's Critical Load Program is available at <https://www.pec.coop/your-service/critical-load-program>. PEC's Commercial & Industrial Accounts team can answer additional questions, and may be contacted by emailing CommercialAccounts@peci.com.

PEC has received information from your entity, however, please ensure you have completed the proper forms and requirements for PEC's Critical Load Application.

NON-STANDARD FACILITIES DESIGN PROCESS & MEMBER RESPONSIBILITIES

Affected water utilities may have several options when implementing their EPP, including measures that range from obtaining various forms of back-up generation, hardening the electric transmission and distribution system serving the affected water utility, or securing dedicated electrical feeds for the affected water utility.

Section 400.9 of PEC's Tariff addresses the provision of non-standard delivery service and facilities, which include in part, but are not limited to, facilities necessary to provide dual feed, automatic and manual transfer switches, service through more than one Point of Delivery, redundant facilities, and non-standard facilities in excess of those normally required for service.

Members or Applicants requesting non-standard facilities will be responsible for all costs associated with the engineering, installation, maintenance, and material costs required to provide and maintain these non-standard facilities. The Cooperative reserves the right to convert or deny non-standard facilities installations if the Cooperative determines that such service may have an adverse impact on the Cooperative's Delivery System or service provided to another Member. (See: [https://www.pec.coop/wp-content/uploads/tariff/Tariff and Business Rules.pdf](https://www.pec.coop/wp-content/uploads/tariff/Tariff%20and%20Business%20Rules.pdf))

Member water utilities may elect to compare costs for modifications to PEC's existing facilities installed to serve the site to the other EPP options, and PEC has two options for obtaining a cost estimate for non-standard services.

1. Member water utilities may hire a PEC prequalified engineering firm to design alternative electrical configurations to serve their facilities. PEC will review those designs, and the Member is responsible for paying all of PEC's costs for that review as noted below pursuant to Tariff Sections 400.16 and 500.4.
2. PEC may prepare a high-level estimate pursuant to Tariff Sections 400.16 and 500.4, which addresses Planning Design Fees. The Planning Redesign Fee is \$500 or actual cost, whichever greater. The Member water utility must pay \$500 in advance, and will be billed for any actual costs that exceed \$500. Member will be responsible for all actual costs.



NON-STANDARD FACILITIES – LIMITATIONS DURING LOAD SHED EVENTS

While facilities such as dual feeds, automatic and manual transfer switches, service through more than one Point of Delivery, and redundant facilities are generally effective to ensure service during normal planned and unplanned outages, in emergency events, including ERCOT-directed load shed (given the uncertainty around potential severity of load shed conditions), PEC cannot guarantee the full operation and availability of installed non-standard facilities, including use of multiple different feeders.

NON-STANDARD FACILITIES ONGOING MEMBER RESPONSIBILITIES

Non-standard facilities essentially reserve capacity on PEC's systems that may otherwise be used to serve other Members. PEC reserves the right, and intends to review these non-standard facilities during future rate analysis to ensure all costs associated with such facilities are appropriately assigned through adequate ongoing rates.

Section 400.9 of PEC's Tariff states neither a Member nor an Applicant may perform service or maintenance to equipment located on the Cooperative's Delivery System. PEC will perform annual maintenance on all non-standard equipment at the sole expense of the Member. If all or any part of non-standard equipment must be replaced, the cost for replacement will be the sole responsibility of the Member. If a Member requests removal of non-standard equipment, the cost for removal will be the sole responsibility of the Member.

CONTACT INFORMATION

For additional inquiries into the information provided, you may reach out to the Cooperative's Commercial & Industrial Accounts team by emailing CommercialAccounts@peci.com or call 888-554-4732, Extension 5049.

Account 3000008804

Freeze Protection Wastewater Treatment Plant Audit Form

Facility or Site: _____ Date: _____

Jobsite Address: _____

<u>Item</u>	<u>Complete</u>	
Process Water Lines	Y	N
All Valves	Y	N
Sensor Lines	Y	N
Backflow Preventer	Y	N
Chemical Feed Solution lines	Y	N
Exposed Water Lines	Y	N
Do Heaters Work?	Y	N
Any and all Items Subject to Freeze	Y	N

*Any items marked No need to be corrected before facility can be considered winterized.

Met with operator to address and complete all freeze protection issues? Y N

Comments: _____

Facility Operator

Date

Manager/ Lead

Date

Open Work Orders for Pond maintenance & repair:

WO#:	Location:	Work scheduled:
2461680	Mary Elise Way, DP 2-2	Small Erosion issue, hole forming by Inlet – work has started
2461783	Jacksdaw Dr, DP 3-3	Erosion issue at embankment of Pond – work has started

Completed Work Orders for Pond maintenance and repair:

WO#:	Location:	Work scheduled:
1701893	Mary Elise Way, DP 2-2	Add grass seed around Pond area
1701898	Mary Elise Way, DP 2-2	Clean silt out of Inlet structure
2053455	591B Katie Dr, DP 2-4	Replace rock that washed out on road to Pond
2135542	Jacksdaw Dr, DP 3-1	Erosion issue at outfall/spillway, area around erosion control fabric and french drain s eroding
2155301	Mary Elise Way, DP 2-2	Clean Inlet
2155305	Reunion Blvd, DP 2-3	Clean Inlet
2276034	Jacksdaw Dr, DP 3-1	Clean Inlet – full of silt
2276039	Reunion Blvd, DP 2-3	Clean Inlet – full of vegetation and silt
2319072	591B Katie Dr, DP 2-4	Replace broken stack located in the sand basin
2319078	591B Katie Dr, DP 2-4	Clean Inlet by fence on far right, clean deep ditch inlet in back
2319098	Jacksdaw Dr, DP 3-1	Clean Inlet
2367082	591B Katie Dr, DP 2-4	Clean silt out of sand bay area so it will drain, clean splitter box – clean silt so it won't hold water, grade in front of splitter box in front of inlet
2387972	RRWCID District Area	Clean all storm outlets as identified on TCEQ Inspection
2466755	591B Katie Dr, DP 2-4	Replaced lock on gate
2483580	591B Katie Dr, DP 2-4	Reset No Trespassing sign
2483622	Mary Elise Way, DP 2-2	Safety issue on trail, Metal edging above ground, replace missing red/white striped gate arm
2396347	Jacksdaw Dr, DP 3-1	Clean silt from inlet – holding water
2543838	Jayne CV	Needs cleaning, remove leaves
2546492	Reunion Blvd, DP 2-3	Clean Inlet

2617180	Reunion Ranch Blvd, DP 2-3	Weld Ring onto end of gate to secure chain, clean inlets
2619039	Denise Cove Storm Drain	Clear vegetation from Bull Rock, remove sediment from inlet
2396357	Mary Elise Way, DP 2-2	Clean silt & vegetation from inlet – holding water – work has started
2275994	591B Katie Dr, DP 2-4	Investigate deep trench, remove vegetation – work has started
2646427	Reunion Ranch DP 2-3	Re-investigate if loop is still welded to gate to attach chain

STORMWATER POND INSPECTION WET PONDS

DISTRICT: REUNION RANCH
DATE: 11/18/2021
WO #: 2696126
TECH.: TAMMY YBARRA

Pond Location	WQP 2-2 (MARY ELISE)
Pond water level?	FULL
Inlets in good structural condition?	YES
Inlets clear of accumulated sediment or debris?	YES
Trash found at site?	NO
Sinkhole, cracks or seeps visible in the embankment?	YES
Erosion present at shoreline?	YES
Erosion occurring around the inlets or outlet structures?	YES
Discharge valve open operational?	N/A
Condition of vegetation around the out fall pipe?	GOOD
Excessive algae blooms present?	NO
Invasive plants present?	NO
Trees or woody vegetation present on the dam or embankment?	NO
Sediment has accumulated and reduced the volume of the pond?	NO DATA

COMMENTS: **EROSION PRESENT AT INLET, BRUSH REMOVAL - WO 2723264**





**STORMWATER POND INSPECTION
WET PONDS**

DISTRICT: REUNION RANCH
DATE: 11/18/2021
WO #: 2696126
TECH.: TAMMY YBARRA

Pond Location	WQP 2-3 (ACROSS 249 REUNION RANCH)
Pond water level?	FULL
Inlets in good structural condition?	YES
Inlets clear of accumulated sediment or debris?	SMALL AMOUNT OF SEDIMENT
Trash found at site?	YES
Sinkhole, cracks or seeps visible in the embankment?	NO
Erosion present at shoreline?	NO
Erosion occuing around the inlets or outlet structures?	NO
Discharge valve open operational?	N/A
Condition of vegetation around the out fall pipe?	N/A
Excessive algae blooms present?	NO
Invasive plants present?	NO
Trees or woody vegetation present on the dam or embankment?	NO
Sediment has accumulated and reduced the volume of the pond?	NO DATA

COMMENTS: POND LOOKS GOOD, INLET HAS SMALL AMOUNT OF SEDIMENT





**STORMWATER POND INSPECTION
SAND FILTER SYSTEM**

DISTRICT: REUNION RANCH
 DATE: 11/18/2021
 WO #: 2696126
 TECH.: TAMMY YBARRA

Pond Location	WQP 2-4 (END OF KATIE)
Pond water level	20%
Does the pond drain within 48 hours?	YES
Sediment depth in the forbay?	WET
Sediment depth in the sand filter area?	UNDER WATER
Trash found at site?	NO
Is vegetation below 18" in height?	YES
Trees or brush found in basin area?	NO
Condition of the media?	WET/MUDDY
Condition of vegetation around the out fall pipe	GOOD
Was sediment found in the under drain piping? Remove open clean out tops and check	UNDER WATER
Any damage to structural elements (pipes, concrete drainage, retaining walls, gabian walls, etc.)?	NO
Trickle Channel or Splitter Box	HAS WATER
Emergency bypass valve closed and operational	N/A
Are all inlets in area clear of debris and sediment?	NO

COMMENTS: INLET HAS SEDIMENT - **WO 2722342**





STORMWATER POND INSPECTION WET PONDS

DISTRICT: REUNION RANCH

DATE: 11/18/2021

WO #: 2696126

TECH.: TAMMY YBARRA

Pond Location	WQP 3-1 (BEHIND 3105 REUNION RANCH)
Pond water level?	FULL
Inlets in good structural condition?	YES
Inlets clear of accumulated sediment or debris?	NO
Trash found at site?	NO
Sinkhole, cracks or seeps visible in the embankment?	NO
Erosion present at shoreline?	NO
Erosion occuing around the inlets or outlet structures?	NO
Discharge valve open operational?	N/A
Condition of vegetation around the out fall pipe?	GOOD
Excessive algae blooms present?	NO
Invasive plants present?	NO
Trees or woody vegetation present on the dam or embankment?	NO
Sediment has accumulated and reduced the volume of the pond?	NO DATA
COMMENTS	Washout in bolder area



**STORMWATER POND INSPECTION
WET PONDS**

DISTRICT: REUNION RANCH
DATE: 11/18/2021
WO #: 2696126
TECH.: TAMMY YBARRA

Pond Location	WQP 3-3 (Behind 3142 Reunion Ranch)
Pond water level?	FULL
Inlets in good structural condition?	N/A
Inlets clear of accumulated sediment or debris?	N/A
Trash found at site?	NO
Sinkhole, cracks or seeps visible in the embankment?	YES
Erosion present at shoreline?	YES
Erosion occuing around the inlets or outlet structures?	YES
Discharge valve open operational?	N/A
Condition of vegetation around the out fall pipe?	OKAY
Excessive algae blooms present?	NO
Invasive plants present?	NO
Trees or woody vegetation present on the dam or embankment?	NO
Sediment has accumulated and reduced the volume of the pond?	NO DATA

COMMENTS: EROSION ON EMBANKMENT - **WO 2461783**





**STORMWATER POND INSPECTION
DRAIN OUTLET**

DISTRICT: REUNION RANCH
DATE: 11/18/2021
WO #: 2696126
TECH.: TAMMY YBARRA

Pond Location	DENISE COVE DRAIN INLET
Pond water level	N/A
Does the pond drain within 48 hours?	N/A
Sediment depth in the forbay?	N/A
Sediment depth in the sand filter area?	N/A
Trash found at site?	N/A
Is vegetation below 18" in height?	N/A
Trees or brush found in basin area?	N/A
Condition of the media?	N/A
Condition of vegetation around the out fall pipe	N/A
Was sediment found in the under drain piping? Remove open clean out tops and check	N/A
Any damage to structural elements (pipes, concrete drainage, retaining walls, gabian walls, etc.)?	N/A
Discharge valve open operational	N/A
Emergency bypass valve closed and operational	N/A
Are all inlets in area clear of debris and sediment?	N/A

COMMENTS: VEGETATION THROUGHOUT BULL ROCK





STORMWATER POND INSPECTION

DISTRICT: REUNION RANCH

DATE: 11/18/2021

WO #: 2696126

TECH.: TAMMY YBARRA

Pond Location	JANE COVE DRAIN
Pond water level	N/A
Does the pond drain within 48 hours?	N/A
Sediment depth in the forbay?	N/A
Sediment depth in the sand filter area?	N/A
Trash found at site?	N/A
Is vegetation below 18" in height?	N/A
Trees or brush found in basin area?	N/A
Condition of the media?	N/A
Condition of vegetation around the out fall pipe	N/A
Was sediment found in the under drain piping? Remove open clean out tops and check	N/A
Any damage to structural elements (pipes, concrete drainage, retaining walls, gabian walls, etc.)?	N/A
Discharge valve open operational	N/A
Emergency bypass valve closed and operational	N/A
Are all inlets in area clear of debris and sediment?	N/A

COMMENTS HAS SEDIMENT, DRY LEAVES AND VEGETATION

